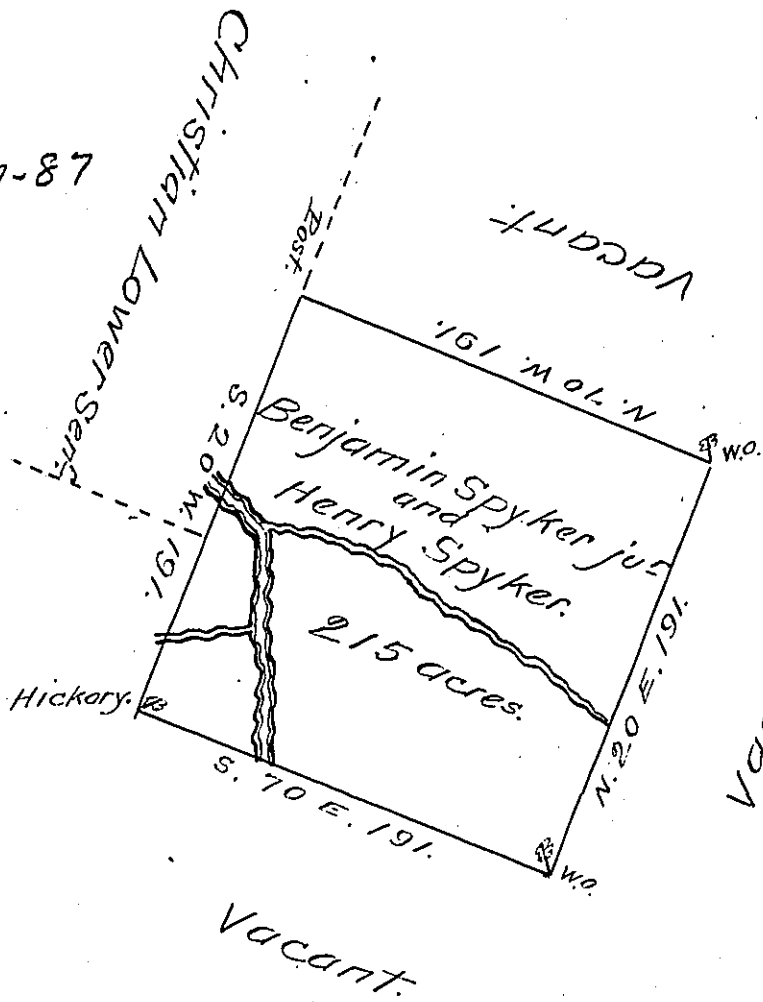


C 117-87



Vacant: C 170 - 282

A Draught of a Tract of land situate on the right hand branch of Sandy Lick Creek about two miles above the forks of said Creek in the County of Northumberland containing 215 acres and allowance of six acres per Cent. Surveyed the 21st. day of November 1785 for Benjamin Spyker junior and Henry Spyker in pursuance of a warrant No. 626 bearing date the 20th day of September 1785.

By Richard Sherer D.S.

To Jno. Lukins Esq. S. G.

Now in Clearfield County.

IN TESTIMONY that the above is a copy of the original remaining on file in the Department of Internal Affairs of Pennsylvania, made conformably to an Act of Assembly approved the 16th day of February, 1833, I have hereunto set my Hand and caused the Seal of said Department to be affixed at Harrisburg, this twenty seventh day of November 1906.

Goach P. Brown
 Secretary of Internal Affairs.